

Sportsman Racing Cells®

FIA FT-3, Very Durable

Approved for use in:

FIA, SCCA, GARRA, ALMS, IMSA, NHRA, ACT, SCORE, CORR and DIRT

Designed for:

Pump Gasoline, Racing Gasoline, AVGAS and Diesel. **Note: Not for Nitro or Alcohol Use!**

The Sportsman Cell from Fuel Safe provides a high quality product at an affordable price. Sportsman Cells are approved for use by most major race sanctioning bodies. They come complete with Steel Container, Full Foam Baffling, Aircraft Nut Ring, Gasket, Pick-up Assembly, Fill Plate and a 3 Year Bladder Warranty.

Specifications:

Standard Equipment:

- Double Coated Flexible Nylon Fabric Bladder
- Full Foam Baffling
- Single AN-8 Pick-up and Vent Check Valve Fittings
- Internal Fuel Strainers
- 2 1/2" Threaded Cap on 6"x10" Plate with Rollover Valve
- Steel Container

Optional Equipment:

- Remote and Flush Cap Fillers (page 20-21)
- Aluminum Container (page 19)
- Twin AN-6, -8, or -10 Pick-up Fittings
- Return Fitting AN-6, -8, -10
- Sending Units Level Gauge (page 28)
- Vent Check Valves 1", 1 1/4", or 1 1/2" (available on multi-location or custom plates only)
- Surge Tanks and Collectors (page 30)



The world's best value in FIA FT-3 soft bladders.



Dimensions do not include 1" container lip.

Part Number	Volume	Length	Width	Height
SM105	5 gal.	13 1/2 in.	13 1/2 in.	8 1/4 in.
SM108A	8 gal.	20 1/8 in.	8 5/8 in.	12 1/8 in.
SM108B	8 gal.	20 1/8 in.	12 1/8 in.	8 5/8 in.
SM110	10 gal.	25 5/8 in.	10 1/8 in.	10 1/8 in.
SM112	12 gal.	20 1/8 in.	17 1/8 in.	9 1/8 in.
SM115	15 gal.	24 5/8 in.	17 1/8 in.	9 1/8 in.
SM117*	17 gal.	20 1/8 in.	17 1/8 in.	12 3/4 in.
SM118A	18 gal.	28 in.	17 1/8 in.	9 7/8 in.
SM118B	18 gal.	33 1/2 in.	20 in.	6 1/2 in.
SM118C**	18 gal.	33 1/2 in.	20 in.	6 1/2 in.
SM122A	22 gal.	34 in.	17 1/2 in.	9 1/2 in.
SM122B	22 gal.	25 in.	16 3/4 in.	13 5/8 in.
SM122C***	22 gal.	25 3/4 in.	25 3/4 in.	8 1/2 in.
SM124****	22 gal.	25 in.	16 3/4 in.	13 5/8 in.
SM125	25 gal.	30 5/8 in.	17 5/8 in.	12 1/8 in.
SM126*****	26 gal. (100L)	27 in.	19 in.	13 in.
SM129	29 gal.	24 1/4 in.	24 1/4 in.	12 3/4 in.
SM132A	32 gal.	34 1/8 in.	17 1/8 in.	14 1/8 in.
SM132B	32 gal.	25 3/4 in.	25 3/4 in.	13 5/8 in.
SM144	44 gal.	25 3/4 in.	25 3/4 in.	17 in.

NOTES:

Container Flange lip is 1" wide.

*SM117 comes with bottom flanged container only.

**SM118C comes with vertical end flanged container only.

***SM122CA available with removable end container.

****SM124 Mod Style Fuel Cell w/Quick-fill option and dipstick.

*****SM126 Aluminum can standard.

Enduro Racing Cells®

FT-3, Low Cost Favorite

Approved for use in:

FIA, SCCA, EMRA, NASA, NHRA, SCORE, CORR, and DIRT

Designed for:

Pump Gasoline, Gasohol (oxygenated gasoline), Racing Gasoline, Diesel, AVGAS, Alcohol and Nitro*.

The Fuel Safe Enduro Cell combines state of the art technology with specially formulated polymer materials to bring you the fuel cell of choice for racers looking to meet the FIA-FT3 specification at an economy price. Enduro Cells come complete with Full Foam Baffling, Aircraft Style Nut Ring, Gasket, Pick-up Assembly, Standard Fill Plate, Rollover Check Valve and a 5 Year Warranty.

Specifications:

Standard Equipment:

- Durable Specially Formulated Polymer Bladder
- Full Foam Baffling
- Single AN-8 Pick-up and Vent Check Valve
- Internal Fuel Strainer
- 2 1/2" Threaded Cap on Standard Plate with Rollover Valve
- Steel Container

Optional Equipment:

- Remote and Flush Cap Fillers (page 20-21)
- Aluminum Container (page 19)
- Twin AN-6, -8, or -10 Pick-up Fittings
- Return Fitting AN-6, -8, -10
- Sending Units Level Gauge (page 28)
- Vent Check Valves 1", 1 1/4", or 1 1/2" (available on multi-location or custom plates only)
- Surge Tanks and Collectors (page 30)

*NOTE: If alcohol or nitro is used, foam baffling must be removed.



Optional Quick-Fill Plate for Remote Filling

Economical, Super-Tough, Gas/Alcohol, Circle Track, Road Course, Off-Road and Race Boats.



Dimensions do not include 1" container lip.

Part Number	Volume	Length	Width	Height	Applications
ED105	5 gal.	13 1/2 in.	13 1/2 in.	8 1/4 in.	All Types
ED108	8 gal.	20 5/8 in.	15 1/2 in.	7 7/8 in.	All Types
ED112	12 gal.	20 1/2 in.	17 5/8 in.	9 3/8 in.	All Types
ED115	15 gal.	25 3/4 in.	17 5/8 in.	9 3/8 in.	All Types
ED122A*	22 gal.	33 3/4 in.	17 5/8 in.	9 1/4 in.	All Types
ED122B	22 gal.	25 in.	17 in.	13 1/2 in.	All Types
ED122B-LM	22 gal.	25 in.	17 in.	13 1/2 in.	Dirt LM
ED125	25 gal.	25 5/8 in.	17 1/2 in.	14 3/8 in.	All Types
ED132A-LM**	32 gal.	25 1/2 in.	17 3/8 in.	18 3/4 in.	Dirt LM
ED132A	32 gal.	25 5/8 in.	17 1/2 in.	18 1/4 in.	All Types
ED132B	32 gal.	33 3/4 in.	17 1/2 in.	14 3/8 in.	All Types

NOTES:

Cells can be made on their side on special order only (w/aluminum can only).

*ED122A available with removable end container.

**ED132A-LM Dirt Late Model comes with -10 pick-up, -8 return and dipstick.



Race Safe Racing Cells®

Lowest Cost, Entry Level

Designed for:

Pump Gasoline, Gasohol (oxygenated gasoline), Racing Gasoline, Diesel, AVGAS, Alcohol and Nitro*.

The Race Safe Fuel Cell from Fuel Safe is designed for the budget racer who wants the best cell possible for the lowest price. Race Safe Fuel Cells come complete with Full Foam Baffling, Fill Plate Assembly, Gasket, Pick-up Assembly, and a 2 year warranty. **Note: Should be mounted in the main confines of the chassis and roll cage.**

Specifications:

Standard Equipment:

- Durable "Cross-Linked" Polyethylene Fuel Bladder
- Full Foam Baffling
- Single AN-8 Pick-up and Vent Check Valve
- 4" Bail Cap on 6"x10" Fill Plate

Optional Equipment:

- Remote and Flush Cap Fillers (page 20-21)
- Aluminum Container (page 19)
- Twin AN-6, -8, or -10 Pick-up Fittings
- Return Fitting AN-6, -8, -10
- Sending Units Level Gauge (page 28)
- Vent Check Valves 1", 1 1/4", or 1 1/2" (available on multi-location or custom plates only)
- Surge Tanks and Collectors (page 30)

*NOTE: If alcohol or nitro is used, foam baffling must be removed.



Low Cost, Basic but Rugged and Complete. Hobby Stock, Imports, Vintage and Road Course.



Available with Optional Steel or Aluminum Container shown on page 19.

Race Safe Racing Bladders (as shown)

Part Number	Volume	Length	Width	Height
RS105*	5 gal.	13 1/4 in.	13 1/4 in.	8 1/4 in.
RS108	8 gal.	20 3/8 in.	15 1/4 in.	7 3/4 in.
RS112	12 gal.	20 1/4 in.	17 1/2 in.	9 3/8 in.
RS115	15 gal.	25 5/8 in.	17 1/2 in.	9 3/8 in.
RS122A	22 gal.	33 1/2 in.	17 1/2 in.	9 1/8 in.
RS122B	22 gal.	24 3/8 in.	16 1/2 in.	13 1/4 in.
RS125	25 gal.	25 3/8 in.	17 1/4 in.	14 1/8 in.
RS132A	32 gal.	25 1/2 in.	17 3/8 in.	18 1/4 in.
RS132B	32 gal.	33 5/8 in.	17 3/8 in.	14 1/4 in.

Race Safe Racing Bladders with Steel Containers

RS205*	5 gal.	13 1/2 in.	13 1/2 in.	8 1/4 in.
RS208	8 gal.	20 5/8 in.	15 1/2 in.	7 7/8 in.
RS212	12 gal.	20 1/2 in.	17 5/8 in.	9 3/8 in.
RS215	15 gal.	25 3/4 in.	17 5/8 in.	9 3/8 in.
RS222A**	22 gal.	33 3/4 in.	17 5/8 in.	9 1/4 in.
RS222B	22 gal.	25 in.	17 in.	13 1/2 in.
RS225	25 gal.	25 5/8 in.	17 1/2 in.	14 3/8 in.
RS232A-LM***	32 gal.	25 1/2 in.	17 3/8 in.	18 1/4 in.
RS232A	32 gal.	25 5/8 in.	17 1/2 in.	18 1/4 in.
RS232B	32 gal.	33 3/4 in.	17 1/2 in.	14 3/8 in.

NOTES:

*RS105 and RS205 come with a 4"x6" standard fill (SF4X6B) plate with a 2 1/4 in. neck and cap.

**RS222A available with removable end container.

***RS232A-LM Dirt Late Model comes with -10 pick-up, -8 return and dipstick.

Custom & Specialty Applications

Fuel Safe Custom Bladders are engineered to exceed the FIA FT-3 or FT-3.5 standards and can be formed into almost any size or configuration to meet your specific application.



Available in Pro Cell, Sportsman, Ultra Cell, Pro Cell Plus and Xtreme Cell constructions.

Fuel Safe Custom Bladders

Fuel Safe has revolutionized the custom fuel cell market by incorporating our unique seamless Pro Cell design, which is capable of being custom fabricated at an affordable price.

Each custom bladder is made to the customer's specifications and is based on drawings, templates, mock-ups or containers supplied by the customer. Plate locations, dimensions and fittings should be specified to ensure they are located in the most functional positions.

To discuss your custom Fuel Safe Fuel Cell requirements, please call one of our highly qualified sales staff at 1-800-433-6524.

Fuel Collector Systems

All custom and standard fuel cells are available with fuel collector systems. Fuel collectors can be made with directional fins, baffle walls, trap doors, and a variety of one way check valves. These fuel collector systems enable drivers to extend their laps during a race or run lighter fuel loads during qualifying. Collectors optimize performance for all types of racing and become especially useful with fuel injection applications (page 30).





IRL/CART Cells

Fuel Safe's amazing 2-ply crashworthy Indy cell is now in nearly every IRL and CART race car. Proven and re-proven at speeds exceeding 200 mph and impacts in excess of 100 g's! USAC # CRFS-102.



Prototype Race Cells

Prototype Race Car fuel cells to meet FIA FT-3 and FT-3.5 specifications.



Motorcycle Cells

Motorcycle cells built to fit factory OEM fuel tanks.



Formula Car Cells

Our Formula Car Cells are custom built to meet your requirements.



Custom Alcohol Bladders

Custom Alcohol Fuel Bladders for all applications.



Spare Tire Fuel Cells

Custom fuel bladders to fit your spare tire location.



Custom Containers

Custom Aluminum Containers built to your specifications.



Vintage Cells

Custom fuel bladders to fit within your original fuel tank and minimize modifications.



Specialty Applications



Armored Vehicle Fuel Cells

Our Armored Vehicle Cells are available in four stages of safety. Our Stage 1 contains explosion-resistant foam only. Stage 2 adds a single layer of semi self-sealing rubber. Stage 3 adds a ballistic barrier made up of layers of shrapnel resistant material. Stage 4 adds a layer of true self-sealing gum rubber for the ultimate in safety. Available for any car, truck, 4x4 or military vehicle.

SA108-1 (Stage 1)

SA108-2 (Stage 2)

SA108-3 (Stage 3)

SA108-4 (Stage 4)



ASA Vortec Racing Cell

Fuel Safe's Vortec 5700 ASA cell is designed to meet ASA specifications and comes complete with 18 gauge powder coated steel container, a 6X10 multi-location plate with a 2 1/2" filler, a built in collector with a directional fin and twin Walbro high output fuel pumps with a built in regulator right on the plate.

XC115A-M Xtreme Cell (15 gal.)



Off Road Buggy Tunnel Cells

Fuel Safe's new low-cost FIA FT-3 approved Enduro tunnel cell for all two seat off-road buggies. The cell is manufactured from a special polymer rotomolded bladder, a .063" fully TIG welded aluminum container, full safety foam baffling, 3" filler with a roll-over valve, 1" vent with a roll-over valve and twin -6 (3/8") fuel pick-ups. The Enduro Off Road Buggy cell comes complete and ready to install.

OB125BE Enduro (25 gal.)

OB128BE Enduro (28 gal.)



Lotus Cells

Our Lotus Super 7 Fuel Cells are designed to fit perfectly in the stock location with a 7 and 5 gallon fuel capacity. These cells use our Pro Cell Bladder which is custom built and installed in a custom fabricated .063 aluminum, fully TIG welded container. The filler, fitting and pick-up all utilize stock hook up locations.

SA113A Pro Cell (7 Gal.)

SA113B Pro Cell (5 Gal.)



NEW Police Cruiser Safety Cells

Fuel Safe's Crown Victoria Interceptor Fuel Cells are currently being used in thousands of police cars in the cities of Phoenix, Chandler, Mesa and many others, and incorporate our High Strength, Low Maintenance safety bladder.

CVPI Police Cruiser Safety Cell



Camaro Racing Cells

Fuel Safe's Third Generation Camaro Racing Cells are designed to fit in the stock OEM locations without any major modifications. Mounting straps are included.

SA114 Pro Cell (24 gal.)



Corvette Racing Cells

Fuel Safe's Corvette Bladder is engineered and designed to fit perfectly into your factory OEM tank. The stock hardware is used to make re-installation a snap.

SA107A Pro Cell (20 gal.)

Replacement Bladders



NASCAR, FT-3.5



FIA FT-3



FIA FT-3



FIA FT-3

Xtreme Cell™ Bladders

The Xtreme Cell Bladder is our Top of the Line Fuel Bladder. These bladders are made along aircraft guidelines and offer excellent physical properties in all areas. They come equipped with full foam baffling which suppresses combustion and fuel slosh. Due to the flexibility of these bladders, it is required that they be encased.

Part No.	Volume	To Fit
RB005	5 gal.	XC105
RB008A	8 gal.	XC108A
RB008B	8 gal.	XC108B
RB010	10 gal.	XC110
RB012	12 gal.	XC112
RB015A-M	15 gal.	XC115A-M
RB015	15 gal.	XC115
RB017	18 gal.	XC117
RB018A	18 gal.	XC118A
RB018B	18 gal.	XC118B
RB018C	18 gal.	XC118C
RB022A	22 gal.	XC122A
RB022B	22 gal.	XC122B
RB022C	22 gal.	XC122C
RB022D	22 gal.	XC122D
RB025	25 gal.	XC128
RB026	26 gal.	XC126
RB029	29 gal.	XC129
RB032A	32 gal.	XC132A
RB032B	32 gal.	XC132B
RB044	44 gal.	XC144

Pro Cell® Bladders

The Pro Cell Bladder comes equipped with full foam baffling which suppresses combustion and fuel slosh. Due to the flexibility of these bladders, it is required that they be encased.

Part No.	Volume	To Fit
RB105	5 gal.	PC105
RB108A	8 gal.	PC108A
RB108B	8 gal.	PC108B
RB110	10 gal.	PC110
RB112	12 gal.	PC112
RB115	15 gal.	PC115
RB117	18 gal.	PC117
RB118A	18 gal.	PC118A
RB118B	18 gal.	PC118B
RB118C	18 gal.	PC118C
RB122A	22 gal.	PC122A
RB122B	22 gal.	PC122B
RB122C	22 gal.	PC122C
RB122D	22 gal.	PC122D
RB125	25 gal.	PC128
RB126	26 gal.	PC126
RB129	29 gal.	PC129
RB132A	32 gal.	PC132A
RB132B	32 gal.	PC132B
RB144	44 gal.	PC144

Pro Cells are also available in a higher strength material.

Call our sales staff at 1-800-433-6524 and ask about "Pro Cell Plus".

Sportsman® Bladders

The Sportsman Bladder is a high quality bladder at an affordable price. They come equipped with full foam baffling which suppresses combustion and fuel slosh. Due to the flexibility of these bladders, it is required that they be encased.

Part No.	Volume	To Fit
RB205	5 gal.	SM105
RB208A	8 gal.	SM108A
RB208B	8 gal.	SM108B
RB210	10 gal.	SM110
RB212	12 gal.	SM112
RB215	15 gal.	SM115
RB217	18 gal.	SM117
RB218A	18 gal.	SM118A
RB218B	18 gal.	SM118B
RB218C	18 gal.	SM118C
RB222A	22 gal.	SM122A
RB222B	22 gal.	SM122B
RB222C	22 gal.	SM122C
RB224	24 gal.	SM124
RB225	25 gal.	SM128
RB226	26 gal.	SM126
RB229	29 gal.	SM129
RB232A	32 gal.	SM132A
RB232B	32 gal.	SM132B
RB244	44 gal.	SM144

Enduro Cell® Bladders

The Enduro Cell Bladder is designed with the budget racer in mind who still wants the additional safety of a bladder. It is made from a specially formulated polymer and they come equipped with full foam baffling which suppresses combustion and fuel slosh.

Part No.	Volume	To Fit
RB305	5 gal.	ED105
RB308	8 gal.	ED108
RB312	12 gal.	ED112
RB315	15 gal.	ED115
RB322A	22 gal.	ED122A
RB322B	22 gal.	ED122B
RB325	25 gal.	ED128
RB332A-LM	32 gal.	ED132A-LM
RB332A	32 gal.	ED132A
RB332B	32 gal.	ED132B

For Sprint Car Bladders, see page 10.



Replacement Cans/Baffling



Powder Coated Steel Containers

For Xtreme, Pro and Sportsman Cells

Part No.	Volume	To Fit
SC105	5 gal.	PC/SM/XC105
SC108A	8 gal.	PC/SM/XC108A
SC108B	8 gal.	PC/SM/XC108B
SC110	10 gal.	PC/SM/XC110
SC112	12 gal.	PC/SM/XC112
SC115A-M	15 gal.	PC/XC115A-M
SC115B	15 gal.	PC/SM/XC115
SC118A	18 gal.	PC/SM/XC118A
SC118B	18 gal.	PC/SM/XC118B
SC118C	18 gal.	PC/SM/XC118C
SC122A	22 gal.	PC/SM/XC112A
SC122B	22 gal.	PC/SM/XC122B
SC122C	22 gal.	PC/SM/XC122C
SC122D	22 gal.	PC/XC122D
SC122E	22 gal.	PC/XC122E
SC124	24 gal.	PC/XC124
SC125	25 gal.	PC/SM/XC125
SC126	26 gal.	PC/SM/XC126
SC129	29 gal.	PC/SM/XC129
SC132A	32 gal.	PC/SM/XC132A
SC132B	32 gal.	PC/SM/XC132B
SC144	44 gal.	PC/SM/XC14

For Enduro Cells

Part No.	Volume	To Fit
SC205	5 gal.	ED105
SC208	8 gal.	ED108
SC212	12 gal.	ED112
SC215	15 gal.	ED115
SC222A	22 gal.	ED122A
SC222B	22 gal.	ED122B
SC225	25 gal.	ED125
SC232A-LM	32 gal.	ED132A-LM
SC232A	32 gal.	ED132A
SC232B	32 gal.	ED132B



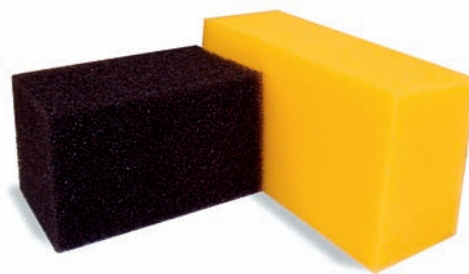
Fully TIG Welded Aluminum Containers with Shoe Box Lids

For Xtreme, Pro and Sportsman Cells

Part No.	Volume	To Fit
AC105	5 gal.	PC/SM/XC105
AC108A	8 gal.	PC/SM/XC108A
AC108B	8 gal.	PC/SM/XC108B
AC110	10 gal.	PC/SM/XC110
AC112	12 gal.	PC1/SM/XC112
AC115	15 gal.	PC/SM115
AC118A	18 gal.	PC/SM/XC118A
AC118B	18 gal.	PC/SM/XC118B
AC118C	18 gal.	PC/SM/XC118C
AC122A	22 gal.	PC/SM/XC112A
AC122B	22 gal.	PC/SM/XC122B
AC122C	22 gal.	PC/SM/XC122C
AC125	25 gal.	PC/SM/XC125
AC126	26 gal.	PC/SM/XC126
AC129	29 gal.	PC/SM/XC129
AC132A	32 gal.	PC/SM/XC132A
AC132B	32 gal.	PC/SM/XC132B
AC144	44 gal.	PC/SM/XC144

For Enduro and Race Safe Cells

Part No.	Volume	To Fit
AC205	5 gal.	ED/RS105
AC208	8 gal.	ED/RS108
AC212	12 gal.	ED/RS112
AC215	15 gal.	ED/RS115
AC222A	22 gal.	ED/RS122A
AC222B	22 gal.	ED/RS122B
AC225	25 gal.	ED/RS125
AC226	26 gal.	ED/RS126
AC232A-LM	32 gal.	ED/RS132A-LM
AC232A	32 gal.	ED/RS132A
AC232B	32 gal.	ED/RS132B



Foam Baffling for Gasoline

For Xtreme, Pro and Sportsman Cells

Part No.	Volume	To Fit
FB105	5 gal.	PC/SM/XC105
FB108A	8 gal.	PC/SM/XC108A
FB109	8 gal.	PC/XC109
FB110	10 gal.	PC/SM/XC110
FB112	12 gal.	PC/SM/XC112
FB115	15 gal.	PC/SM/XC115
FB115A-M	15 gal.	PC/XC115A-M
FB118A	18 gal.	PC/SM/XC118A
FB118B	18 gal.	PC/SM/XC118B
FB118C	18 gal.	PC/SM/XC118C
FB122A	22 gal.	PC/SM/XC112A
FB122B	22 gal.	PC/SM/XC122B
FB122C	22 gal.	PC/SM/XC122C
FB122D	22 gal.	PC/XC122D
FB122E	22 gal.	PC/XC122E
FB124	24 gal.	PC/XC124
FB125	25 gal.	PC/SM/XC125
FB129	29 gal.	PC/SM/XC129
FB132A	32 gal.	PC/SM/XC132A
FB132B	32 gal.	PC/SM/XC132B
FB144	44 gal.	PC/SM/XC144

For Enduro and Race Safe Cells

Part No.	Volume	To Fit
FB205	5 gal.	ED105/RS105
FB208	8 gal.	ED108/RS108
FB212	12 gal.	ED112/RS112
FB215	15 gal.	ED115/RS115
FB222A	22 gal.	ED/RS122A
FB222B	22 gal.	ED/RS122B
FB225	25 gal.	ED/RS125
FB232A-LM	32 gal.	ED/RS132A-LM
FB232A	32 gal.	ED/RS132A
FB232B	32 gal.	ED/RS132B

Fill Plates

Xtreme Cell, Pro Cell, Sportsman Cell, Enduro Cell, Ultra Cell and Race Safe Cell Fill Plates

Standard Plates



Standard 6x10 Fill Plate
w/2 1/2" Threaded Filler
Cap & Flap Valve - **SF6x10A**



Standard 6x10 Fill Plate
w/2 1/4" Filler Twist Cap
& Flap Valve - **SF6x10B**



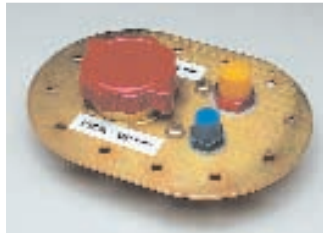
Standard 6x10 Fill Plate
w/4" Bail Cap
SF6x10D



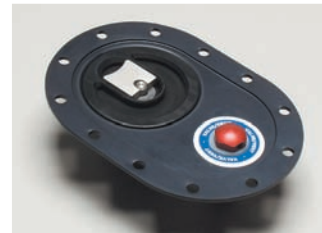
Aircraft Style Flush Caps
See page 27.



Standard 4x6 Fill Plate
w/2 1/2" Threaded Cap &
Flap Valve - **SF4x6D**



Standard 4x6 Fill Plate
w/2 1/4" Filler Cap & Flap
Valve - **SF4x6B**
w/2 1/4" Tall Neck w/Cap
& Flap Valve - **SF4x6C**



Standard 4x6 Fill Plate
w/Flush Cap, Sprint
Standard Light Weight -
SF4x6A
NEW 2.7" Large Cap -
SF4x6E

**See page 25 for
Blank Plates.**

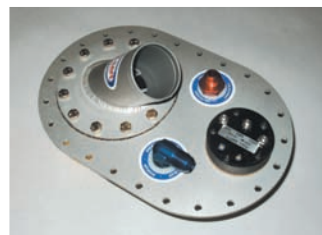
Multi-Location Plates



Multi Location 6x10 Plate
w/1 1/2" Vent Valve. See
page 21 for fill valves.
ML6x10A



Multi Location 6x10 Plate
w/1" Vent Valve - **ML6x10B**
w/1 1/4" Vent Valve - **ML6x10C**
w/1 3/4" Vent Valve - **ML6x10D**



Multi Location 6x10 Plate
Offset Filler - **ML6x10E**
Offset w/Sender Provision
ML6x10E-S (shown)

**See pages 21 & 24 for
Quick-Fill Valves.**



Remote 4x6 Fill Plate
w/3" Flapper Valve and
1" Vent Valve - **RF390B**



Remote 4x6 Fill Plate
3" - **RF390A**
2 1/4" - **RF4x6A**
w/Flapper Valve



**Dual 6x10 3" 45°
Remote Fill Plate**
w/1" Vent - **DR345**



Dual 2 1/2" ALMS Fill Plate
DR250 with Check Valves,
Fill and Vent

Fill Valves

Remote Fill Valves



Remote 2 1/4" & 2 1/2" Fill Valves

2 1/4" 45° Roll Over Valve
(4 3/4" B.C.) - **FV245A**

2 1/4" 90° Roll Over Valve
(4 3/4" B.C.) - **FV290A**

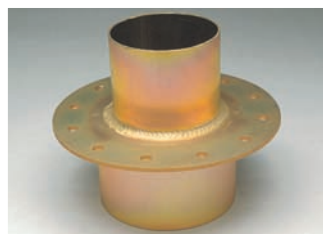
2 1/2" 45° Roll Over Valve
(4 3/4" B.C.) - **FV245B**

2 1/2" 90° Roll Over Valve
(4 3/4" B.C.) - **FV290B**



Remote 3" Fill Valve

90° Roll Over Valve
(4 3/4" B.C.) - **FV390**



Remote 3" Fill Valve

90° Remote Fill Valve
(5 3/8" B.C.) - **CTR300-90**



Remote 2 1/4" Fill Valves

45° Roll Over Valve
(5 3/8" B.C.) - **CTR225-45**

90° Roll Over Valve
(5 3/8" B.C.) - **CTR225-90**



2 1/4" Cap w/Roll Over Valve

90° Remote Fill -
4 3/4" B.C.
FV290A-C



2 1/2" 90° Remote Fill Threaded Neck w/Cap

4 3/4" B.C. - **FV290B-C**
with Rollover Valve



Quick Fill 45° Fill Plate

w/ 2 1/4" Roll Over Valve
QF245
w/ 3" Roll Over Valve
QF345



Dual 6x10 3" 45° Remote Fill Plate

w/1" Vent - **DR345**

NOTE:

For custom Fill Plates or Fill Valves, please call one of our highly qualified sales staff at 1-800-433-6524.



Dry Break Refueling Valves

Refueling Accessories



Fuel Safe Dry Break Valve

DBM275 - 2 1/4" Male Valve w/Handle. Specify hose size when ordering.



Dry Break Valve - Redhead®

DBM125A - Male 1 1/2" dry break valve



NEW Redhead NASCAR®

DBM250NR - Male
DBF250NR - Female



Dry Break Valves - Redhead®

Legal for NASCAR, USAC, IMSA, SCCA and SCORE. Mounts in various locations, this valve makes refueling safe and easy. It automatically closes when male probe is withdrawn to prevent any fuel spillage. Flows at a rate of 2 gallons per second.

DBF300R - Female 2 1/4"
DBM200R - Male 2 1/4"



Double Dry Break Valves - Redhead®

DDBM225R-100 or **DDBM225R-4.5** - Male Probe Redhead® 2 1/4" Specify 100mm or 4.5" center.
DDBF225R-100 or **DDBF225R-4.5** - Female Receptacle Redhead® 2 1/4" Specify 100mm or 4.5" center.



Dry Break Valves - Redhead®

DBF125-A - Female 1 1/2" tank mount

DBF125-B - Female 1 1/2" remote mount



Fuel Safe Dry Break Valves

DBM225A - Male 2", 2 1/4", 2 1/2"
DBF225A - Female w/Bulb
Specify size when ordering.



Fuel Safe Double Dry Break Valves

DDBM225 - Male Probe
DDBF225 - Double Female (4.5" center only)



Dry Break Valves - Redhead® Tank Mount

DBF225-B - Female 4" B.C.
DBF225-C - Female 4 3/4" B.C.



Dry Break Rebuild Kits

1HEW40 - Redhead Male 2 1/4"
1HDW39 - Redhead Female 2 1/4"
PP125M - Redhead Male 1 1/2"
PP125F - Redhead Female 1 1/2"

Refueling Towers & Accessories



50 Gal. Tower
Bladder Style
RT50A

Refueling Towers - Bladder Style

For the pro racing team,
flow rate up to 2 gallons
per second. Foldable.

RT50A - 1 1/4" Hose and
Nozzle

RT50B - 2" Hose and Valve

RT50C - 2" Hose for Fill and
Vent



Refuel Tower
Tank Style

Refueling Towers - Tank Style

Pro Endurance race, flow rate
up to 2 gallons per second,
collapsible.

RT60A - Aluminum Tower
with 2" Hose for Fill and
Vent (60 gal.) **Grand Am**
legal.

RT80A - Aluminum Tower
with 2 1/2" Hose for Fill and
Vent (80 gal.)

RT100A - 2 1/2" Hose and
Valve (100 gal.) Off-Road
Racing 10' High.



2" Female Cam Lock Adaptor Fittings w/2" Barb

CLF200 - Straight
CLF200-90 - Elbow



Cam Lock Fitting and Cap

CLM200 - 2" NPT Male Cam
Lock Fitting
CLC200 - 2" Cam Lock Dust
Cap



Deadman Safety Valve

Spring load shut off valve
designed for refueling tow-
ers. Let the valve handle go
and refueling stops.

DV125 - 1 1/4" Valve

DV200 - 2" Valve

DV250 - 2 1/2" Valve



Aluminum Dump Can

DC011A - Legal 11 gallon
Dump Can, a must
where quick refueling is
required.

DC011B - 37° angled
NASCAR style Filler
Spout.

Custom Aluminum Dump Cans
are also available.



Quick Fill Dump Cans

Dump cans give you a
choice of 2 1/4" and 2
1/2" spouts, a must
where quick refueling is
required.

DC011R - 11 gallon - Red

DC011W - 11 gallon - White



NASCAR® Catch Can

Designed to catch over-
flow during refueling.

CC100 - Standard

CC100R - w/check valve
rod



Refueling Vent Bottle

Designed to be used
during refueling with
dry break systems.
Fill or vent.

MSJ05 - 5 gallon/20 liter

NOTES: Custom sizes available.
Available with optional Double Drybreak
refueling accessories.

Vent Valves & Accessories

Discriminator and Vent Valves



Check Valves

ITVV08 - 1/2" Vent Check Valve for remote fill. Mounts in fill plate. Offers positive shut-off.

ITVV08S - 1/2" Vent Check Valve w/spring for standard fill. Mounts in fill plate. Offers positive shut-off.

ITVV06 - 3/8" Vent Check Valve for remote fill. Mounts in fill plate. Offers positive shut-off.

ITVV06S - 3/8" Vent Check Valve w/Spring for standard fill. Mounts in fill plate.

ILVV06 - 3/8" In-Line Vent Check Valve offers positive shut-off.

ILVV08 - 1/2" In-Line Vent Check Valve offers positive shut-off.



Vent Check Valve

Mounts in bladder. This valve offers positive shut-off.

ITV100 - 1" Check Valve

ITV175 - 1 3/4" Check Valve

ITV100-NF - 1" Weld-in Check Valve



Discriminator Valves

The ultimate in fuel venting. This valve offers automatic shut-off when refueling and eliminates the need for a catch can. Also offers positive shut-off in case of a rollover. In-tank discriminator valves also available.

DV100 - 1"

DV175 - 1 3/4"



Roll Over Valve

RV38 - 3/8" Inline Roll Over Vent Valve.

Air Vent Filters



Fuel Cell Air Vent Filters

VF38 - 3/8"

VF12 - 1/2"

VF100 - 1"

VF175 - 1 3/4"

Miscellaneous Accessories



Blank Aluminum Plates

IPLA05 - 12 Bolt Oval - 4"x6"

IPLA13 - 24 Bolt Oval - 6"x10"

IPLA14 - 12 Bolt Circle - 4 3/4" B.C.

IPLA16 - 10 Bolt Circle - 3 1/8" B.C.

IPLA18 - 6 Bolt 2 15/16" B.C.

IPLA30 - 6 Bolt Circle - 2" B.C.

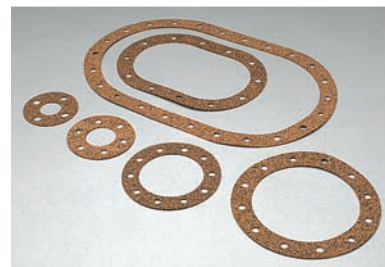
IPLA34 - 5 Bolt (Sending Unit)

IPLA62 - 4 Bolt Circle - 1 5/8" B.C.

IPLA75 - 16 Bolt 6" B.C.

CBP009 - 4" B.C. 9 Bolt

CBP012B - 5 3/8" B.C. 12 Bolt



Gaskets

From 4 hole bolt circle to 24 bolt oval.

OG024 - 24 Bolt Oval - 6"x10"

OG012 - 12 Bolt Oval - 4"x6"

CG012A - 12 Bolt Circle - 4 3/4" B.C.

CG012B - 12 Bolt Circle - 5 3/8" B.C.

CG010 - 10 Bolt Circle - 3 1/8" B.C.

CG009 - 9 Bolt Circle - 4" B.C.

CG006A - 6 Bolt Circle - 2 15/16" B.C.

CG006B - 6 Bolt Circle - 2 3/8" B.C.

CG006C - 6 Bolt Circle - 2" B.C.

CG005 - 5 Bolt Circle (Sending Unit)

CG004 - 4 Bolt Circle - 1 5/8" B.C.

GK016 - 16 Bolt Circle (6" B.C.)

GK110 - Gasket Kit for SA110A

GK118 - Gasket Kit for SA118

Fuel Pumps, Filters & Accessories



Fuel Pick-Up Kit

Kit contains 2 ft. of hose, (1) swivel hose barb, (1) bulkhead fitting and (1) filter.

FP180 - 3/8" - 6 AN

FP181 - 1/2" - 8 AN

FP182 - 5/8" - 10 AN (no filter)

FP183 - 3/4" - 12 AN (no filter)



In-tank Fuel Pump Assembly

FP150 - GM In-tank style fuel pump

FP115 - Vortec ASA 5700

1ELE15 - In-tank low pressure pump

FS15 - Filter (fits FP150 and FP115)

1ELE36 - Porsche Scavenge Pump



NEW Low Profile Billet Corner Pick-up

LPC06 - 6AN

LPC08 - 8AN

LPC010 - 10AN

NOTE: Requires attachment stud installed by manufacturer.



Corner Pick-up Assembly

Designed for use where maximum fuel pick-up is required. It's unique design allows the fuel line to pick-up the last drop of fuel. A must in limited gallonage classes.

CP38 - 3/8"

CP12 - 1/2"

CP58 - 5/8"



In-line Fuel Pump Assembly

FP101 - Low pressure pump w/filter



NEW Wiring Harness

1ELE41 - Wire harness, male, hermetically sealed, positive locking.

1ELE42 - Wire harness, female, hermetically sealed, positive locking.



Billet Low Profile Pick-up

BPU08 - Low Profile Pick-up -8AN

BPU010 - Low Profile Pick-up-10AN

NOTE: Requires attachment in bladder.



In-tank Pump Wiring

WH15F - Female wire harness bulkhead, 4-wire.

WH15M - Male wire harness bulkhead, 4-wire.

1ASM38 - Female 2-wire

1ASM39 - Male 2-wire



Fuel Pick-up Filter

FS38 - 3/8" Horizontal Screen

FS12 - 1/2" Horizontal Screen

FS06 - 3/8" Vertical Screen

FS08 - 1/2" Vertical Screen

Fillers, Caps & Hoses

Fender Fillers



Recessed Remote Fender Filler

Recessed remote fender fillers makes refueling easier. Mounts in remote location, such as on fenders or decks.

RFF225 - 2 1/4" neck (red cap)

RFF300 - 3" neck (silver cap)



Recessed Fender Filler Kit

Kit contains: (1) recessed fender filler, 2 ft. of filler hose, 2 ft. of aluminum tubing and (4) hose clamps.

RFK225 - 2 1/4" I.D. hose

RFK300 - 3" I.D. hose

Filler Necks and Caps



Off-Road Filler Neck and Cap 4"

FN400 - 4" remote neck

FC400 - 4" bail cap

CTF400 - 4" bail cap flange

NOTE: Remote neck does not come with cap. Must be ordered separately.



Filler Necks and Caps

1 3/4" to 3" steel filler necks and caps to fabricate your own fuel inlet system.

FN150 - 1 1/2" O.D. threaded filler neck (uses FC175 cap)

FN225 - 2 1/4 x 7/8" O.D. filler neck

FN225A - 2 1/4 x 1 1/4" O.D. aluminum filler neck

FN225L - 2 1/4 x 2 3/4" filler neck

FN250 - Threaded filler neck

FN300L - 3 x 3" O.D. filler neck

FC175 - 1 3/4" threaded filler cap - non-vented

FC225 - 2 1/4" filler cap - non-vented

FC250C - 2 1/2" Threaded cap - Coarse - non-vented

FC300 - 3" filler cap - non-vented

Flush Caps



Aircraft Style Flush Cap

AFC300A - 2 1/2" 12 Bolt (4 3/4" B.C.)

AFC300B - 2 1/2" 9 Bolt (4" B.C.)

AFC300C - 2.7" 12 Bolt (4 3/4" B.C.)

AFC200A - 2" 6 Bolt (3" B.C.)

AFC200B - 2" 6 Bolt (3" B.C.) w/2" and 2 1/4" Remote Flange

AFC175A - 1" 6 Bolt (2 1/2" B.C.)

AFC175B - 1 3/4" w/Weld Flange

FA300 - 9 bolt Fender Adapter for 3" AFC300B

FC325 - 3" Flush Cap only



Hoses

Filler and vent hoses from 1/4" to 3".

CFH300 - 3" I.D. clear filler hose

CFH300W - 3" I.D. clear filler hose w/wire reinforcement

CFH250 - 2 1/2" I.D. clear filler hose

CFH250W - 2 1/2" I.D. clear filler hose w/wire reinforcement

BFH250 - 2 1/2" I.D. reinforced black filler hose

CFH225 - 2 1/4" I.D. clear filler hose

CFH225W - 2 1/4" I.D. clear filler hose w/wire reinforcement

BFH225 - 2 1/4" I.D. reinforced black filler hose

CFH200 - 2" I.D. clear filler hose

CFH200W - 2" I.D. clear filler hose w/wire reinforcement

CVH175 - 1 3/4" I.D. clear vent hose

CVH175W - 1 3/4" I.D. clear vent hose w/wire reinforcement

CVH125 - 1 1/4" I.D. clear vent hose

CVH100 - 1" I.D. clear vent hose

CVH100W - 1" I.D. clear vent hose w/wire reinforcement

CVH100N - 1" I.D. clear vent hose w/nylon reinforcement



2 1/4" and 3" Rubber Elbows

45° and 90° tough rubber elbows for use with remote fill plates.

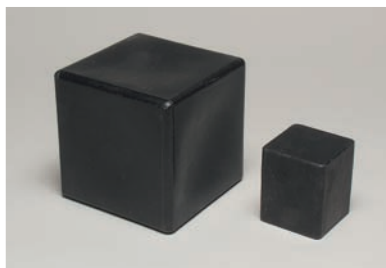
RE90 - 3" - 90°

RE45 - 3" - 45°

RE90 - 2 1/4" - 90°

RE45 - 2 1/4" - 45°

Miscellaneous Racing Accessories



Fuel Volume Displacement Blocks

DB200 - 2 gal. Block - 5"x8"x12"

DB100 - 1 gal. Block - 6"x6"x6"

DB050 - 1/2 gal. Block - 8 3/4"x
3 1/2"x3 1/2"

DB025 - 1/8 gal. Block - 2 7/8"x
2 7/8"x3 3/8"

Custom sizes also available.



Fuel and Vent Hook Up Fittings

Hose Barbs, 45° and 90° fittings to hook up your fuel cell as quickly and safely as possible.

HF90 - AN 90° Hose Barb

HF45 - AN 45° Hose Barb

HF00 - AN Straight Hose Barb

Specify (-4), (-6), (-8), (-10) or (-12) fitting



Fuel Cell Straps

Black powder coated straps available for all cells and bladders.

Part No. - Add (-S) to Fuel Cell Part # (example: PC108-S)

Sending Units, Low Level Sensors and Gas Gauges



Electronic Sending Unit and Gauge

New electronic fuel level sending units are specially designed for fuel cells and bladders. No moving parts makes this unit very durable. Sending unit can be shortened to fit your cell and recalibrated for accuracy.

SU006 - 6" - can be shortened to 3"

SU012 - 12" - can be shortened to 6"

SU024 - 24" - can be shortened to 12"

GA200 - Gas gauge

NOTES:

Add (-L) to part # for fully adjustable low level light assembly (example: SU012-L).

Specify Ohm range of fuel gauge to be used.



Adjustable Low Level Sensor

For positive indication of low fuel levels.

1ELE07 - 6" length

1ELE13 - 12" length

1ELE08 - 24" length



Dip Stick

Economy Fuel Gauge, check your fuel level by a twist of a nut. Specify length needed.

DS08



Porsche Accessories



Porsche Double Dry Break Adapter for C2 and C4 Cells

DDBA225 - For 100mm centers

DDBF225T - Double Dry Break Valve for DDBA225 Adapter.



6x10 Remote Fill Plate

For Porsche SA100 and SA101

RFP6x10



Standard 6x10 Fill Plate

For Porsche 911/930 w/Cap

SF6x10P

Surge Tanks, Collectors & Trap Doors



Trap Door Check Valves

TD100 - (-22) 1 3/8" Round Check Valve

TD125 - 1 1/4" Trap Door Check Valve Aluminum

TD150A - 1 1/2" Trap Door Check Valve Aluminum

TD150P - 1 1/2" Trap Door Check Valve Molded



Surge Tank Collector (Plastic)

Designed with check valve or trap door to collect all usable fuel and lessen the chance of fuel starvation.

ST100A-B - Surge Tank Collector w/(3) Trap Doors.

Specify size: (-6), (-8) or (-10).

NEW ST100-HP - w/High Pressure Pump and Wire Harness

NEW ST100-LP - w/Low Pressure Pump and Wire Harness

ST100-6 - (-6) Fitting

ST100-8 - (-8) Fitting

ST100-10 - (-10) Fitting

CV100 - 1" Surge Tank Check Valve



NOTES: Fuel pump can be mounted in any Surge Tank or Collector.

Custom Surge Tanks available.



Surge Tank Collectors (Urethane/Nylon)

Designed with check valve to trap all usable fuel to lessen the chance of fuel starvation.

ST100B - Corner Collector with (2) Ball Check Valves

ST100C - Center Collector with (3) Ball Check Valves

ST100D - Corner Box Collector with (2) Ball Check Valves

ST100E - Center Collector w/(3) Ball Check Valves and Directional Fins

ST100B-B - Corner Collector w/ (1) Trap Door

ST100C-B - Center Box Collector with (3) Trap Doors

ST100D-B - Corner Box Collector with (2) Trap Doors

ST100E-B - Center Collector w/(3) Trap Doors and Directional Fins.